



Japanese Mission Entrance

A.Form architecture pc was contacted by Platt Beyer Dovell Architects to submit a proposal for a custom entrance canopy. The canopy will compliment the current renovation to this landmark 100 year old building.

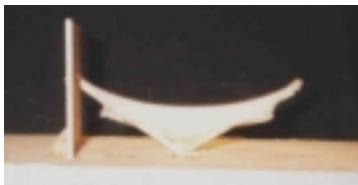
Inspired from Japanese kite design, we developed a very light and floating canopy which has minimal interface with the buildings facade, thus satisfying the building landmark status rules and regulations.

By working directly with a fabricator, we identified a design and budget for the custom awning, which enabled us to stay competitive with a typical awning company.



Sketch of Entry w/Canopy

Project: Entrance Canopy
Location: Japanese Mission to United Nations
Client: Platt Dovell Beyer Architects
Details: 200 square feet fabric area
Aluminum structural members
engineered for snow and wind loads
Consultants: Fabric Structures Incorporated



Physical Model - Elevation



Model - Perspective



Model - Plan